

- Remon  
HR boilers



**REMON**  
passion for water



**Remon creates high-quality water treatment systems tailored to your water needs. Based on our vision and experience, we have been providing water for plants, factories, humans, and animals for over 40 years.**

**- Smart stainless steel boilers with High efficiency**

|| Remon arranges everything down to the last detail ||

Mark van Buuren - Kijkje bij de Buuren

Remon is a manufacturer of high efficiency boilers. These smart boilers use a high efficiency geyser and a high-quality stainless steel buffer tank, so that much warm water can be kept in stock with a minimum downtime loss. If required, this water can be heated further quickly and efficiently in case of peak demand. These high efficiency boilers have a much lower energy/gas consumption than conventional boiler systems.

**- Multifunctional boilers with Online control**

**Remon has been a reliable partner in the field of water treatment for more than 40 years.**

Our boilers can be equipped with various heat sources, like a solar boiler, an electrical element, a heat recovery, or a gas-fired geyser. Of course, these heat sources can also be combined thanks to the various additional heat exchangers in the tank. All tanks are by default provided with online control and touch screen operation. On request and at a discount price, 'basic' controls without online PLC control are available.

The tanks are available in various versions and sizes. In addition, (provided that a solar boiler is chosen,) an ISDF grant can be given that can amount up to 4000 Euro. Typically, an Energy investment tax credit is applicable as well. Contact Remon for more information.

**- This is why you should have a boiler from Remon**

- ✓ Various capacities
- ✓ High efficiency
- ✓ Stainless steel boiler tank
- ✓ Smart control with touch screen
- ✓ On request, Remon manufactures and installs itself
- ✓ 24/7 service
- ✓ Possible subsidies (EIA, KIA en ISDE)



**Visit our website: [www.remon.com](http://www.remon.com)**



## - The HR-boilers from

# Remon

### Basic

The basic boiler is the most standard version with a tank and a geyser. This system keeps water in stock and, in the event of a demand for more and hotter water, the outgoing water can be heated even further with the geyser. It is possible to connect other heat sources to the tank. The basic version is available from 200 litres, up to a stainless steel boiler tank with 1000 litres.



### Duo (hybrid)

With the Duo, multiple heat sources are connected to the tank, like a heat recovery system, an electrical element, or a solar boiler. Therefore, various heat sources are in use and they are all controlled flawlessly by Remon's smart, PLC controlled, touch screen operated, online control. The Duo is also available from 200 litres, up to a stainless steel boiler tank with 1000 litres. The mounted Remon HR Geyser® preheats the stainless steel boiler tank to a basic temperature of 60 °C. The hot water of 60 °C can be used for general consumption and pre-flushing of, for example, milk pipes, milking robots and milk tanks. In the future, it is possible to achieve the basic temperature of 60°C, or the full temperature of 85°C, with electricity generated by solar panels or a windmill, for example. This is possible through a PV charging set and the 400 Volt - 4.5 kWh electrical element. So, the installation can be built on natural gas, electricity, or both. Therefore, it is a hybrid installation.



### Electric

The purchase of a gas-fired device is not everybody's desire nowadays. That is why Remon included the electric high efficiency boiler in its delivery programme. This boiler of the future is entirely gas-free, if required it uses a solar boiler or heat recovery system, and generates plenty of hot water in this way. This innovative boiler has a stainless steel boiler tank with various temperature levels. Through a smart charging system, only the upper part of the boiler can be heated up to, for example, 85 °C. The lower part of the boiler tank will then be preheated by the solar collectors. If required, the entire boiler tank can be heated to 85 °C using a smart 60 hours timer (to be mounted on your pipe).





# Remon Controller® smart operating system for your boiler.



- **Everything under control with the Remon controller®**

Everything visible and controllable on your phone, tablet, or computer!

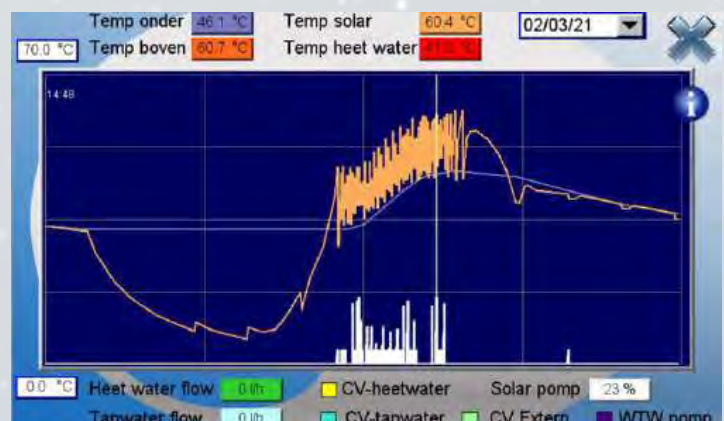
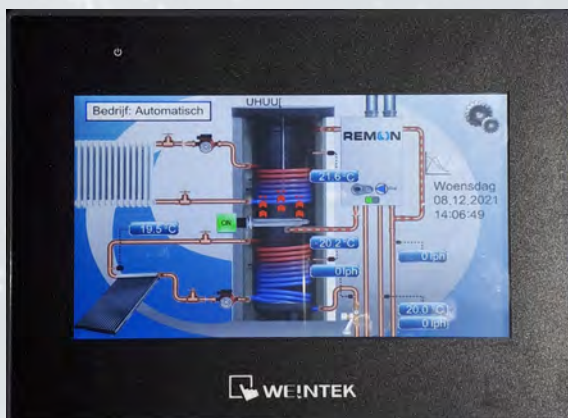
Remon Water Treatment has developed the patented RemonController®. A unique tool for you to remotely control and monitor your HR boiler. All relevant data about your HR boiler is digitally recorded and processed into information that gives you, as an end user, complete control at any time, through any device in a very user-friendly manner. This proven, reliable digital technology is already widely used by Remon in their groundwater installations and also in these innovative HR boilers.

- **Control and operate From a distance**

Service and reliability constitute the strength of Remon

Sari de Ruijter - Holidaypark the Sikkenberg

The digital controller is equipped with a large color touchscreen. This screen is easily connected via the internet to a tablet, laptop, or PC. The main screen displays a real-time color image with all the current data of the boiler, including the efficiency of the solar panels or heat pipes. Through the screen, it is possible to optimize the boiler for maximum efficiency, as well as to detect and resolve malfunctions. Complex malfunctions can be directly forwarded to Remon's service department, which then analyzes and, if possible, resolves the issue by remotely logging into the RemonController®. The actual water consumption per day or period is also displayed on the screen in a clear overview.



Follow us on:





# REMON

passion for water

## - Prevent water pressure issues with a Pressure booster

Due to climate change, we are experiencing increasingly dry summers in the Netherlands; water levels are decreasing, and water companies have less water available. As a result of the reduced pressure in the drinking water network during periods of high demand, your high-efficiency boiler may not function as effectively. The potential consequence is flush water with a too low temperature. It is advisable to take precautions beforehand and not wait until it's too late.

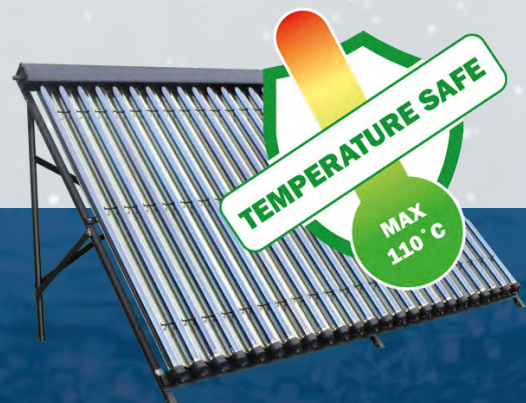
A pressure booster is the solution. A pressure booster is a pump installed between your water meter and your high-efficiency boiler. This prevents low water pressure, ensures your boiler continues to function smoothly, and maintains a sufficiently high temperature for your flush water.



## - "Boilers and solar panels, solar collecting plates, or heat pipes," Sustainable combination

The Remon boilers can derive their energy from solar panels, flat plate collectors, or heat pipes that excel at retaining heat even at low temperatures. Depending on the space available on your roof or facade and the weather conditions, the base temperature of 60°C can be fully generated by the sun. On sunny days, heat pipes alone are sufficient, for example, to provide your dairy farm with water at 85°C.

Generate all the required energy for your hot water through the sun, regardless of the weather? Connect your Remon HR boiler to our Temperature Safe Heatpipes. These innovative collectors excellently retain the sun's heat even at low outside temperatures. This way, you achieve a very high efficiency both in the summer and winter periods. Even at temperatures well below freezing, your water is heated with sufficient radiation.







- **Various subsidy options for your Remon HR boiler**

When making an investment in your business, it's always reassuring to know that it can be made even more attractive through subsidies. When you purchase an HR boiler from Remon, it qualifies for the following subsidies:

**EIA (energy investment deduction)**

With EIA, you can deduct 45.5% (2023) of the costs for the purchase and installation of your HR boiler from the taxable profit, in addition to your usual depreciation. This way, you pay less income tax or corporate tax. Your net EIA benefit is approximately 11.25% of the investment costs.

**ISDE (Investment subsidy for sustainable energy)**

Since January 1, 2016, when purchasing a Remon HR boiler Solar, you may also benefit from the ISDE. This scheme subsidizes the investment of both entrepreneurs and individuals in various devices that produce sustainable energy, including solar boilers. However, the ISDE cannot be combined with the EIA.

**KIA (Small-Scale Investment Deduction)**

In addition to the EIA and ISDE, you can also benefit from the Small-Scale Investment Deduction (Kleinschaligheidsinvesteringsaftrek or KIA in Dutch). With this scheme, you can deduct up to a maximum of 28% of your investment in your new HR boiler from your profit. The amount of the deduction depends on any other investments you have made in the investment year. You can combine KIA and EIA to achieve a substantial discount on your investment.



- **Water is our Passion**  
**That's why Remon should be your choice**

Every situation is unique. Every water plant too. Because no place is the same, every situation requires its own solution. At Remon we understand that.

To be of great service to you, your contact with Remon starts with a conversation with our customer service. From here, you will be brought in contact with our experienced and specialized field representatives. They are able to select the right water installation with you, to ensure that the water meet your needs.

Once the sale is closed, the work preparation will begin and a custom water treatment will be prepared and assembled for you. Then the system is installed, commissioned and turn-key delivered for years of trouble-free purified water.

That is what we mean by *'passion for water'*

- **All in-house**  
**The installations from Remon**

Because we believe that only the best is good enough, we often manufacture our installations in-house. Only then can we achieve the exact quality that we aim to deliver. We build everything ourselves, have our own molds, create our own schematics, program the computers and online connections ourselves, and install and maintain everything ourselves. Only in this way can we consistently produce water of any desired quality, ensuring a constant standard.



**Visit our website [www.remon.com](http://www.remon.com)**